

# Skiing center Savin Kuk



SKI SLOPE - GREAT SLALOM  
SKI SLOPE - SLALOM - A  
SKI SLOPE - SLALOM - B

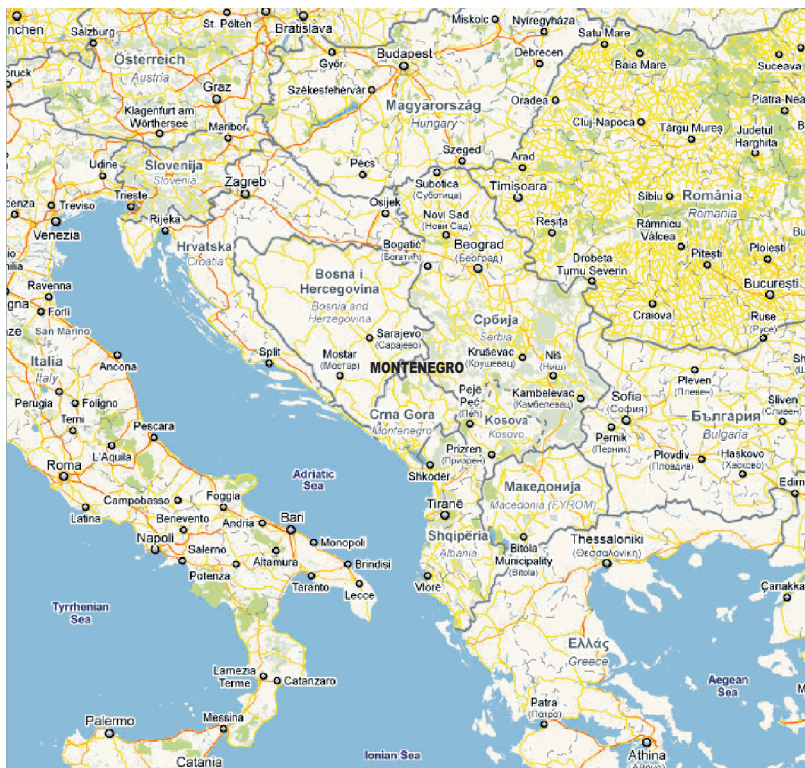
# Montenegro

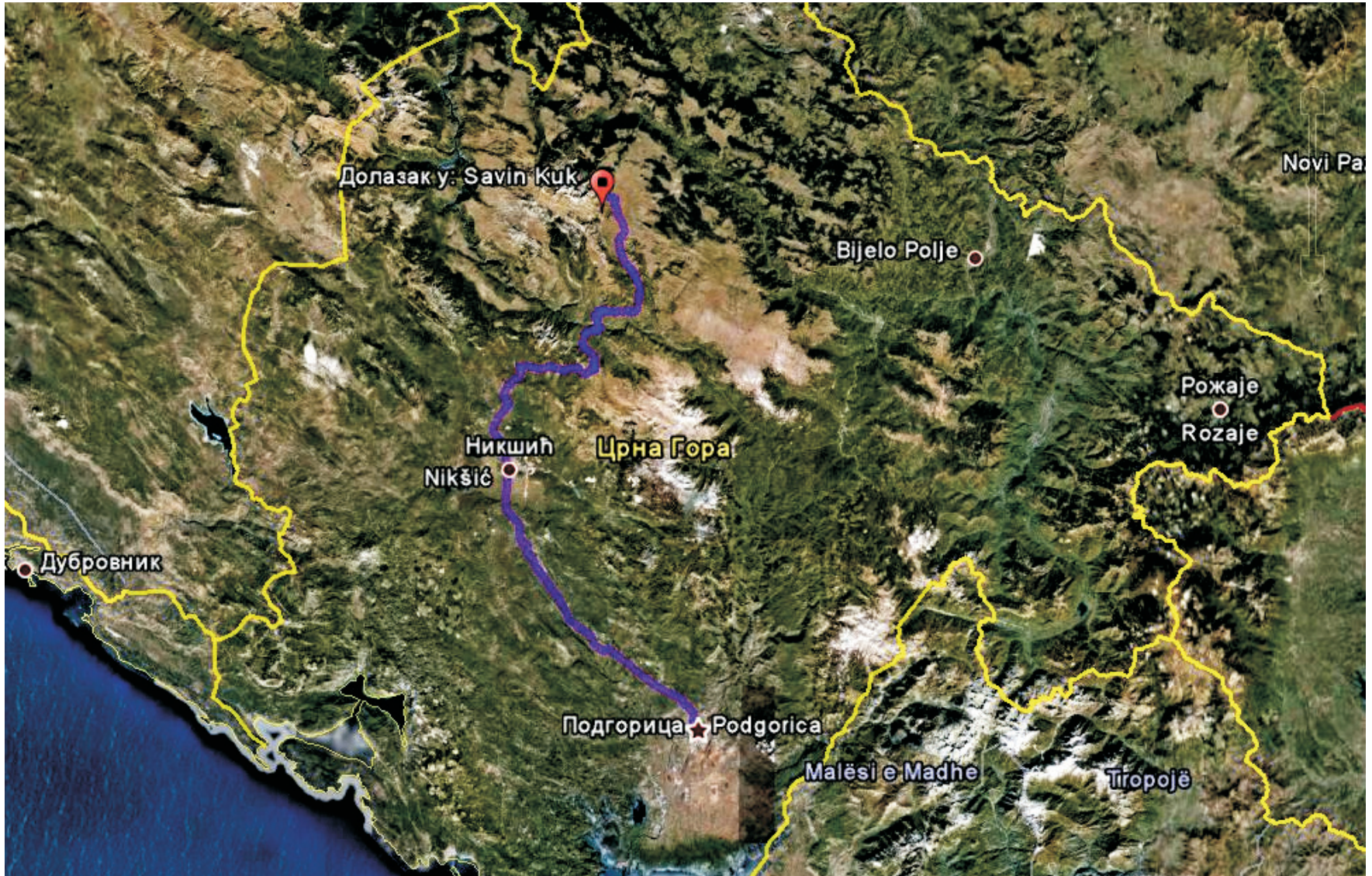
Montenegro is in the southwest on the Balkan peninsula. It extends between 41 ° 51 'and 43 ° 30' north latitude geografske, and between 18 ° 26 'and 20 ° 21' east longitude. The southernmost point is located at the mouth of river Bojana in the Adriatic Sea and the northernmost deep into the mainland near Tromeda Bosnia, Serbia and Montenegro. Although the distance between these two points only 190 km, between the Mediterranean climate of the south and rugged mountain peaks to the north as there is an entire world. For this reason, Montenegro, called a land of 6 continents. The geographical and climatic diversity and its geographical location make it the destination that will offer a morning swim in the waters of the Mediterranean and the afternoon skiing like the one in the Alps.

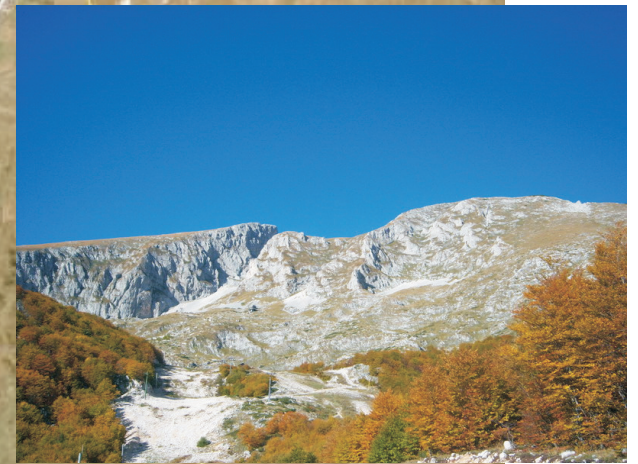
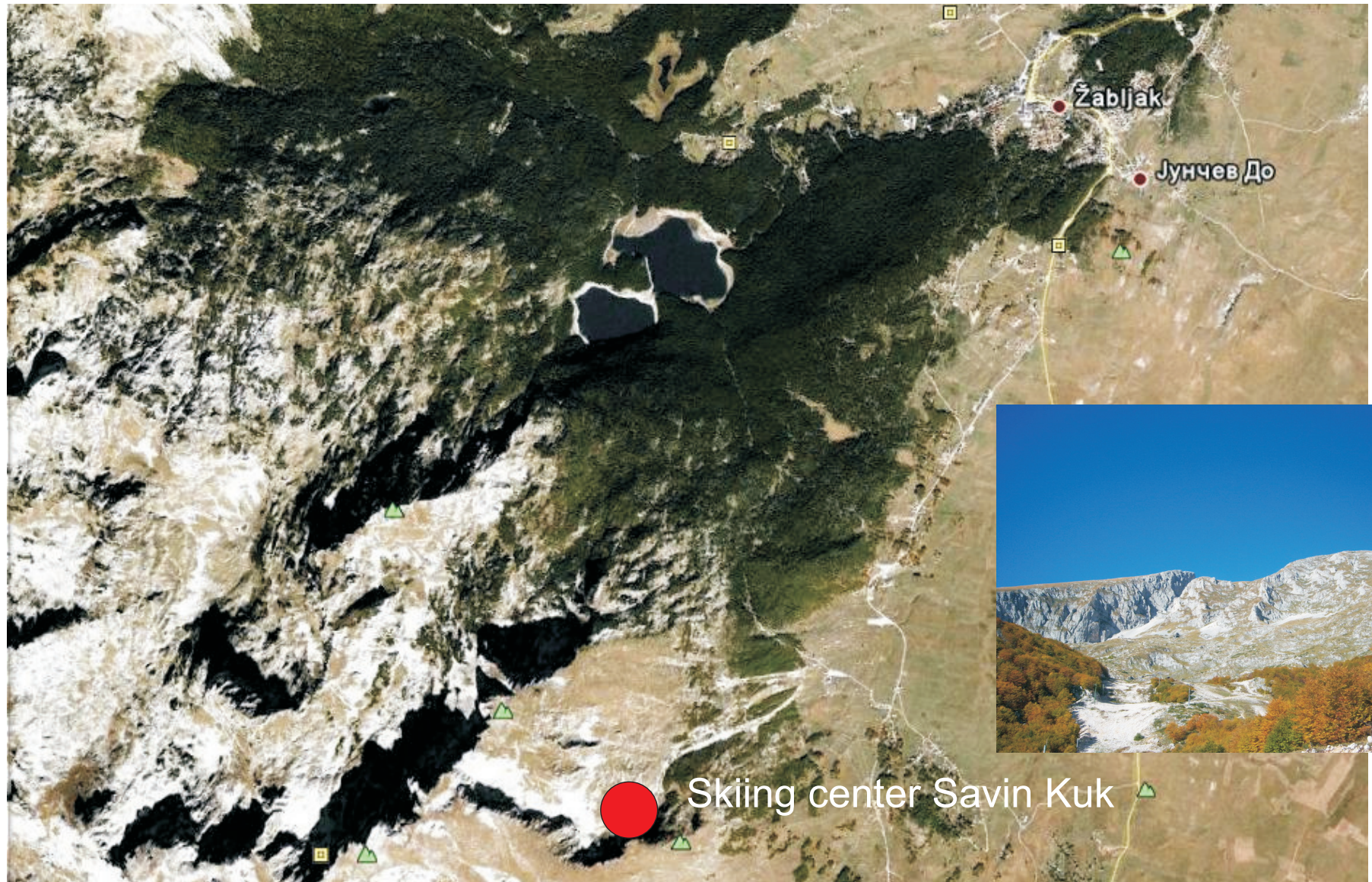
## General information about Montenegro

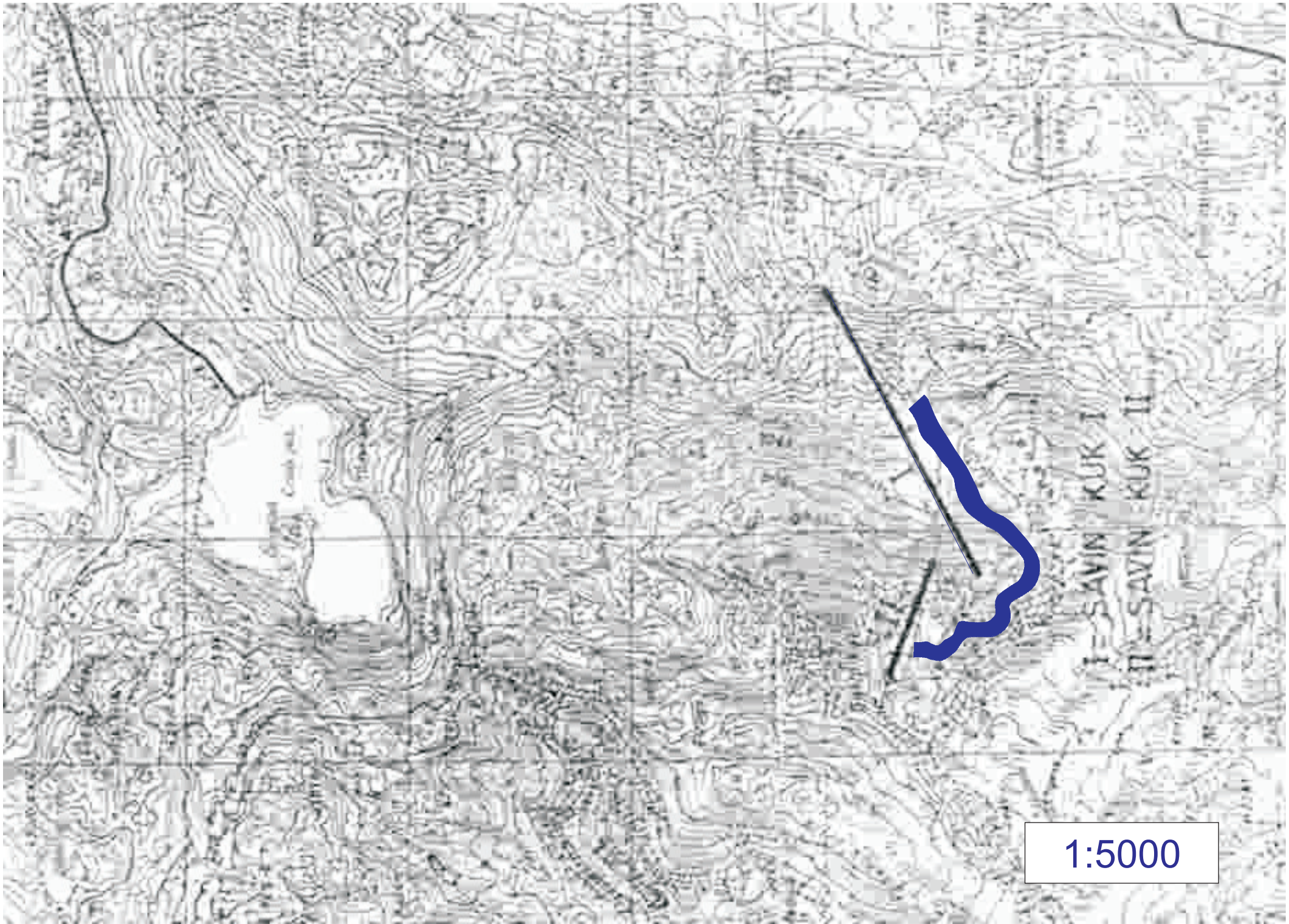
Area of Montenegro - 13 812 km<sup>2</sup>,  
Total population -> 650.000,  
Coastline - 294 km,  
117 Plaza total length of 73 km,  
Most of the mountain - 2536 m (Prokletije Zla Kolata), and 2522 m (Durmitor, Bobotov hip),  
The largest lake: Skadar Lake,  
Republic of Montenegro and an independent state since May 2006.,  
Capital: Podgorica,  
Capital: Cetinje,  
The official currency in Montenegro - EURO.

Skiing descent Savin kuk is located 134 kilometers from Capital city Podgorica (Podgorica – Niksic: 52.0 km- 1 h 15 min, Niksic – Savin Kuk: 81.5 km- 1h 45 min)  
Skiing descent Savin kuk is located 4.5 kilometers from Zabljak.  
Podgorica Airport is located 15km ( 25 min) from city.  
Skiing descent Savin kuk is 2313 m above sea level.  
The vertical transport is by two cables , three ski lifts, and two baby lifts, the total length of which is 9.5 kilometers. A new descent, on the right side is for beginners, for recreational activities, and for children. Right by the descent there are two restaurants the property of the SKI CENTER DURMITOR, named MONTANA and DURMITORSKO SIJELO with an eye on romantic Durmitorian winter nights.  
Two contest descents for slaloms and one for the great slalom have a FIS homologization.  
Zabjak is covered with snow for 120 days a year

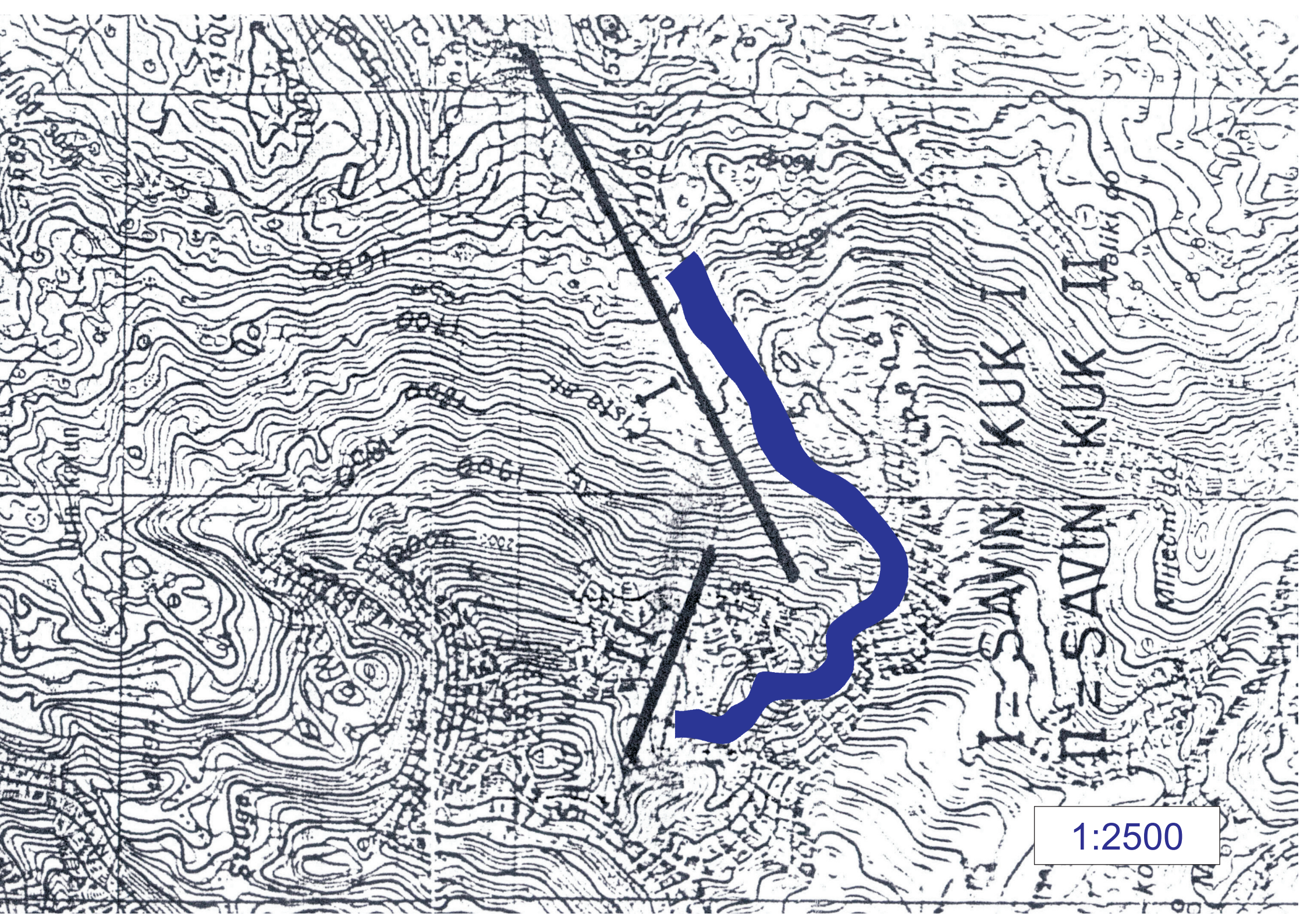








1:5000

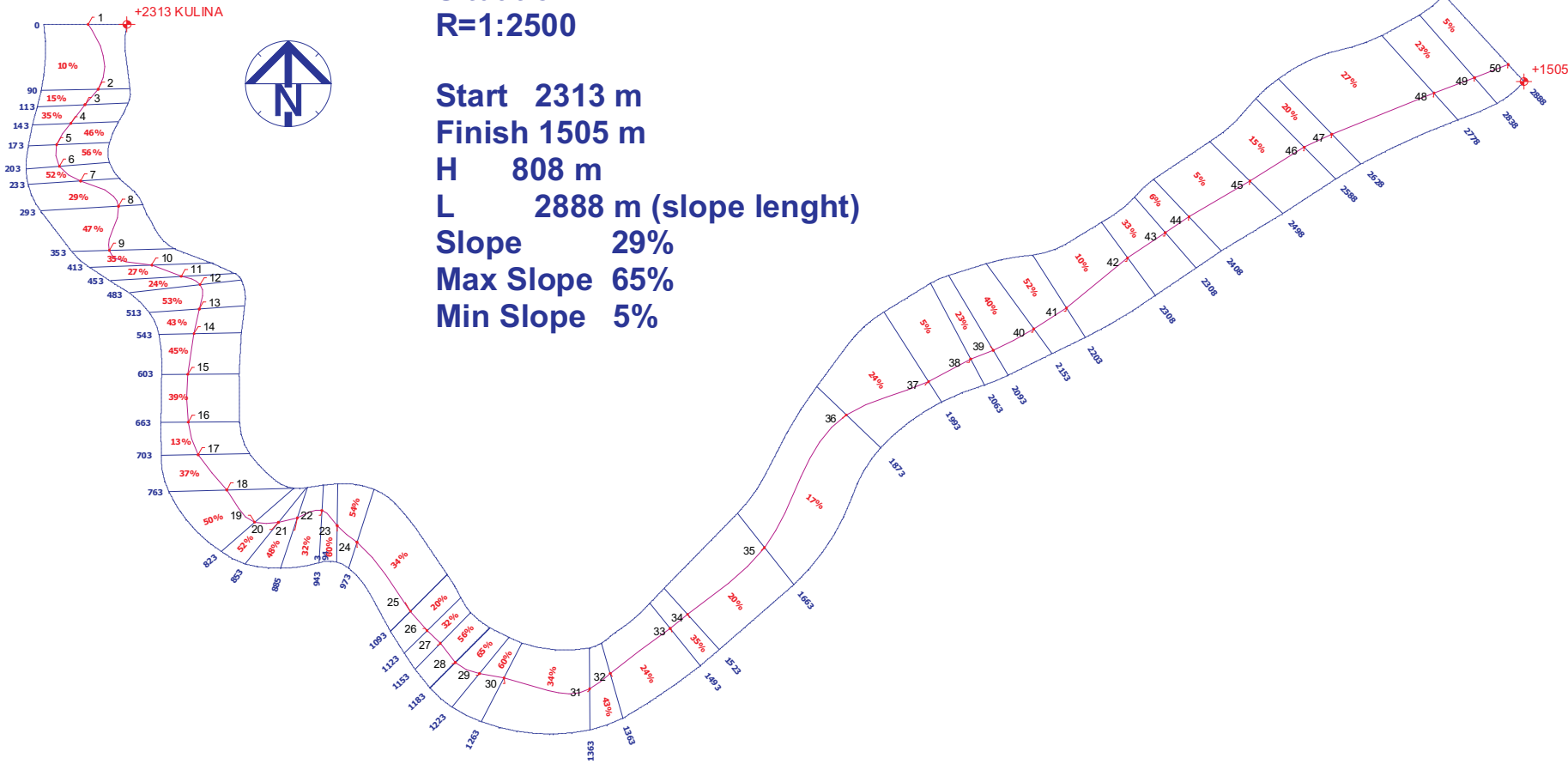


1:2500

# Ski slope great slalom

Situation  
R=1:2500

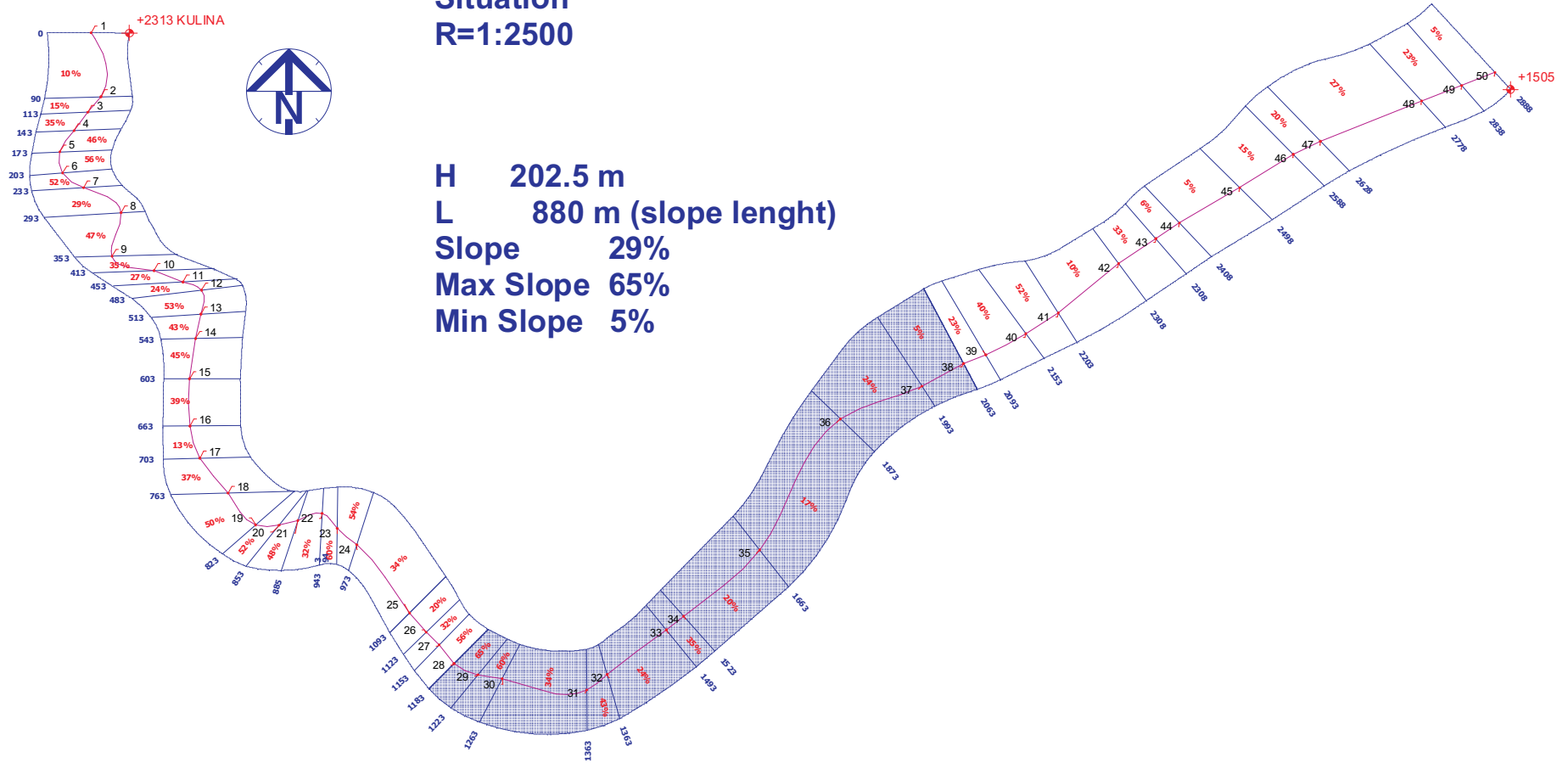
Start 2313 m  
Finish 1505 m  
H 808 m  
L 2888 m (slope lenght)  
Slope 29%  
Max Slope 65%  
Min Slope 5%



# Ski slope slalom A

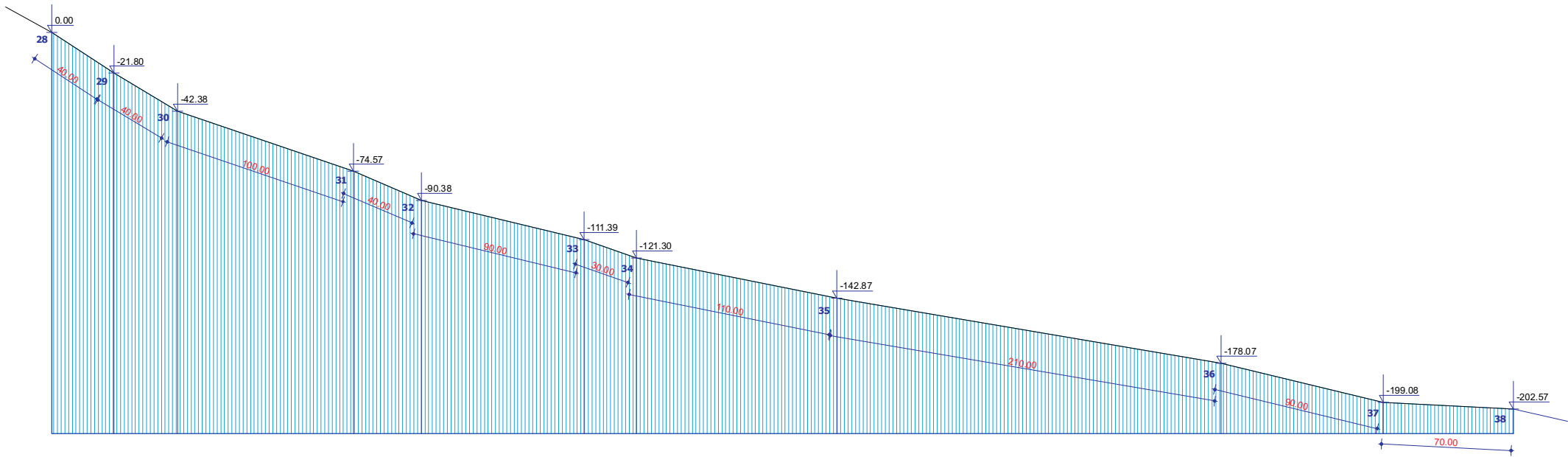
Situation  
R=1:2500

H 202.5 m  
L 880 m (slope lenght)  
Slope 29%  
Max Slope 65%  
Min Slope 5%





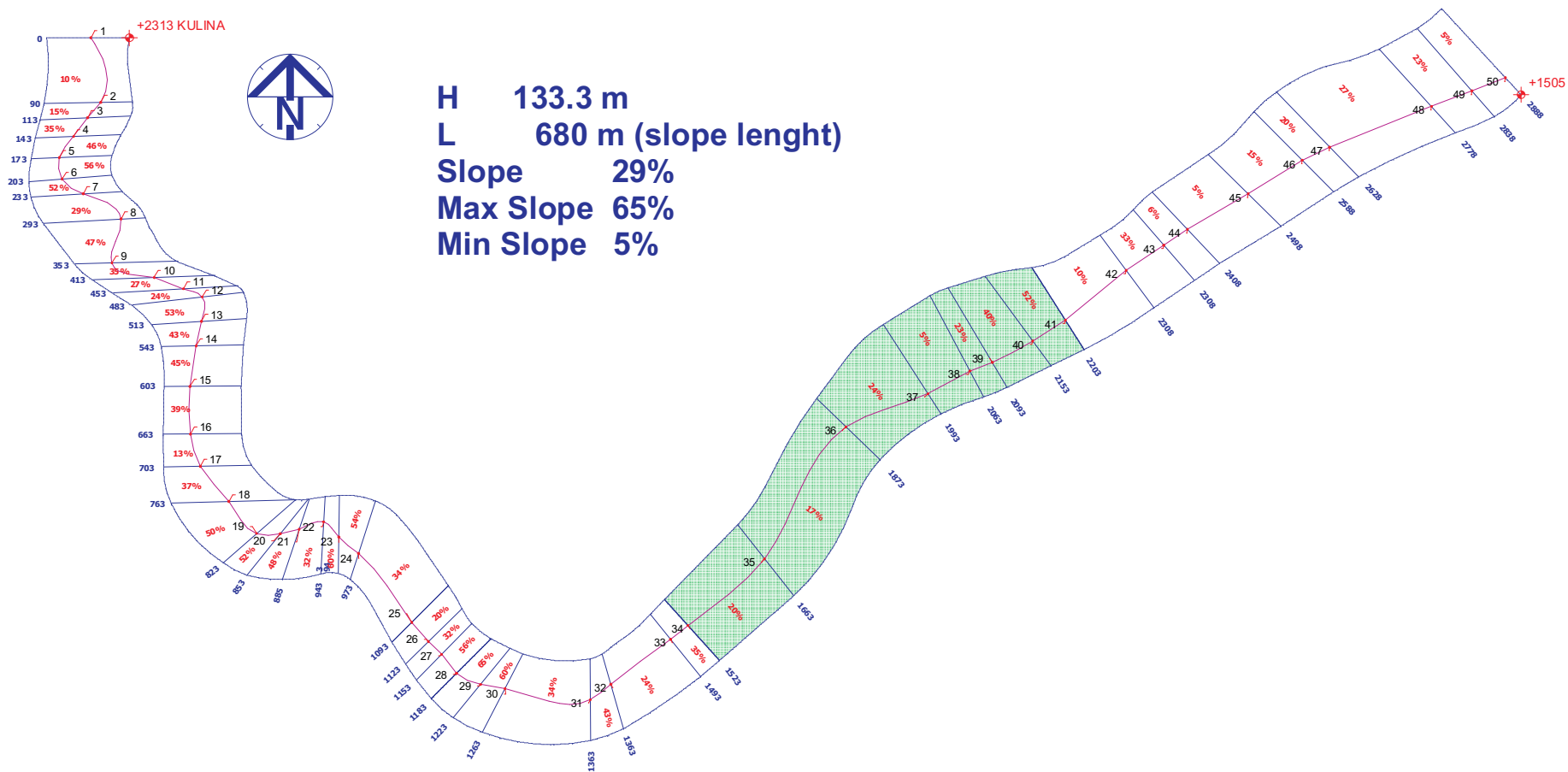
# Ski slope - slalom A



# Ski slope slalom B

Situation  
R=1:2500

H 133.3 m  
L 680 m (slope length)  
Slope 29%  
Max Slope 65%  
Min Slope 5%



## Ski slope - slalom B

